

Annual Report 2017 - 18

- Name of the college –**Veerangna Jhalkari Bai Govt. Girls College Gwalior (M.P.)**
- Place of the college – Own Building
- District - **Gwalior**
- Division - **Gwalior**
- Year of establishment of college - 1982
- Name and Contact details (Mail id, Phone) of Principal – Dr. Chandrawati Singh I/C Principal Mob. No.8433214271
- Date of report submission –16.07.2018

- **Part I-**

- **The Principal's Report**

- **College Chalo Abhiyan:** On 31.06.2017 our institute started College Chalo Abhiyan for the pass out students of Intermediate class in the local Higher Secondary schools
- **Online Admission** - Our College is the Degree College for online admission. All the admissions for the first year students of PG class are done through online registration and verification process.
- **Scholarship State** - The Students from economically weaker section of all categories avail scholarships like Post-Metric, Gaonki Beti, Nishakt-Jan, AwasiyaYojna, Medhavi Yojna, Pratibha Kiran Yojna and Nirdhan ChhatraYojna. The Management of the college ensures that all the students are benefitted. Every year hundred percent students who fulfill the criteria utilize these scholarships.

Signature and Seal of Principal

(i) **Overview**

(ii) **Vision of the college**

The College proposed to develop a scientific temper among the students imparting skills helpful in getting Jobs

Mission of the college

- To enlighten Students mind with quality value aided Education.
- To develop the student personality and language skill.

Objective of the college

- Inculcating a profound test of erudition and learning activities beneficial to holistic development

(iii) **Brief introduction of the college**

The College is situated on the Gwalior Morena Link Road –The College was started in the Year 1982 and is duly affiliated to Jiwaji University Gwalior. Right from the inception the college started imparting degree level learning in Arts groups including six subjects i.e. Hindi, English, Pol Science, Economics, Sociology and Home science PG and Sociology (regular) and Hindi (SFS) The College Has its Own Building.

(iv) **History of the college with significant milestones**

Earlier The Name of This College Was Govt.Naveen Girls College Gwalior Now It is Known As - Veerangna Jhalkari Bai Govt. Girls College Gwalior (M.P.)

Signature and Seal of Principal

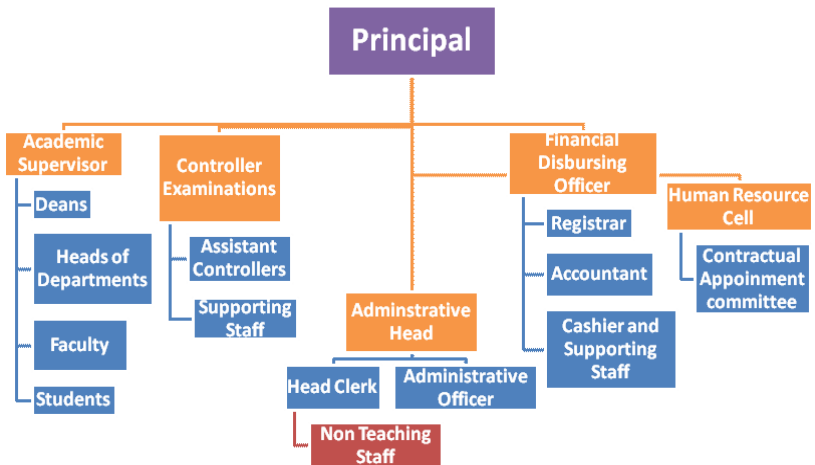
Faculties and major disciplines

The college runs in Arts group at only Graduation level with six subjects i.e. Hindi, English, Pol Science, Economics, Sociology and Home science and Post Graduate and two subject Sociology (regular) Hindi(SFS).

- **Senior Management Team and Board of Governors**

Lists the members of the senior management team (Principal, Registrar, Deans etc.) and members of the Board of Governors including their designations and professional backgrounds.

Administrative Hierarchy



Signature and Seal of Principal

Janbhagidari Samiti - Registered

- **Admission Statistics on 30 sep 2017**

- The number of applicants at the UG and PG level who ranked the college as their 1st, 2nd and 3rd preference, and the number of students admitted at each level as per the following format.

Applications	UG	PG	PhD
Applications that ranked the college as the 1 st preference	54		
Applications that ranked the college as the 2 nd preference	15		
Applications that ranked the college as the 3 rd preference	34		
Total number of applications received	107	10	
Number of students admitted	103	8	

Data Source: E-Pradesh portal, records of the affiliating university

- A brief demographic profile of students admitted (in terms of gender, caste, whether from MP etc.) as on 30 Sep 2017

Name of the Course	Gender		Category				% of students from the State		% of students from other states
			SC	ST	OBC	G	H		
BA								100	NIL
		M						100	
		F						100	
	TOTAL		16	-	67	20	01	100	

Signature and Seal of Principal

- **Academic Programs: Core Programs - UG**

Core programs at UG level

Stream	Name of the Core Program	Eligibility	Optional subjects
Arts	Bachelor of Arts	10+2 from a recognized Board OR 10+2 with relevant vocational course from M.P. Board	Foundation course + a group of 3 optional subjects
	Master of Art	PG	Sociology (regular) Hindi (SFS)

- **Academic Calendar 2017 according to Directorate of Higher Education directions followed by all government colleges**

Academic Work	First year 2017 Exam First week 07 De 2017 Main Exam 30 Mar Practical 05 March To 21 Mrch2018 Prep. Leave 22To 29 Mar		
	Third/ Fifth Semester	Fourth/ Semester	Sixth
Orientation Classes/Zero Classes/SWOT analysis	01 July – 08 July	26 Dec	
Teaching and Continuous Comprehensive Evaluation	11 th July to 02 10 July to 2 Nov	03 Jan – 23 Apr 27 Dec 18 Apr	
CCE Schedule	III week of Sep	III week of March	
Preparation Leave	03 Nov to 11 Nov	24 Apr to 26 Apr	

Practical Exams (Graduation/Post Graduation)	02 Nov to 09 Nov III week of Oct to II Week of Nov 23 Oct 9 Nov	7 Apr to 24 Apr
Semester and ATKT Exams	12 Nov to 21 Dec 10 Nov to 14 Dec	27 Apr to 27 May 23 Apr to 26 May 2018
Declaration of Examination Results	Till 31 Dec	Till 15 Jun
Semester Break (for students)	22 Dec to 31 Dec 15 Dec to 23 Dec	27 May to 30 Jun 28 May 30 Jun
Semester Break (for teachers)	22 Dec to 31 Dec 15 Dec to 23 Dec	27 May to 15 Jun 28 May to 15 Jun 2018

- **The Student Experience**

- The college has started working since 1982 in the rooms provided by Private Building. The students taking admission in the college belong to the rural area of nearby vicinity. The feeder institutions of this college do come from the rural background so the college life of students is not much different from the Higher Secondary students. The college has building of its own. However the college has taken initiatives since 1982 till date to motivate the students and make them available every possible facility which could otherwise have marred their potential. Keeping this in view co-curricular activities specially sports activities have been conducted in the college.

- Library as a learning resource-

Initially the college was not having books and journals according to the requirement of the students but gradually the college managed to buy the books for the academic programmes and now the number of books have been raised to 13000 approx. Apart from these the college is making arrangements for the E-Library and SOUL software for further assistance to the learners

Student support services:

- ✓ IT enabled services
- ✓ The college Has Own building and proper arrangement of such issues The office has computer systems equipped with internet facility and is made available to students in need but somehow the difficulties persist unresolved due to lack Of Funds

- ✓ Financial assistance (scholarships/ schemes for SC/ST/OBC/minority, Group & Health Insurance Schemes)
- ✓ Financial Assistance has been given to students in the name of
 - ✓ --Gaonkibeti
 - ✓ --Post Matric
 - ✓ --AwaseeyaYojna
 - ✓ -- free books and stationary distribution to SC ST students

Personal enhancement & development schemes-
The college has a career Guidance Cell to guide students regularly

Extracurricular activities:

Sports activities have been conducted at college level
Major student welfare initiatives over the past year- NIL

Extension Activities- NIL

Student Achievements - NIL

- **Research Activities -NIL**
- **List of linkages/ Collaborations/ MOUs-NIL**
- **College Publications: Research Journal, Magazine, Newsletter-NIL**
- **Human Resources**

1. Faculty and Administrative appointments: Teaching and Non-teaching

Positions	Teaching Faculty				Non-Teaching Faculty	Technical Staff
	Prof	Promoted Prof	Assistant Prof	Guest Faculty		
Sanctioned by UGC/ University/ State Govt.			08		Librarian Office	Office 10
<i>Filled</i>	-	-	06	-	09	01

Sanctioned by Management/ Janbhagidari Samiti/ Other authority	Govt.		Govt.	Govt.		
<i>Filled</i>			-			

2. Guest Faculty: subject-wise appointments

S.no.	Name of the Guest Faculty	Qualification	Subject
1	JitendraAroliya	Ph.D.	English
2	Moshmi Singh	Ph.D.	Home science

3. Annual improvement in academic, research & administrative Initiatives

Events and Initiatives -Nil

- **Institutional Development plan**

Indicator*	Baseline Value	Target for [current year]	Value as on 30 th September [current year]
Rise in number of students seeking admission	increasing number of students	10 percent increase in overall number	10 percent increase in the girl students

Role of Internal Quality Assurance Cell (IQAC) in academic audit and initiating quality assurance strategies and processes- IQAC Cell is in the college

- **Placement Report -02**
- **Innovations and Best Practices-Nil**
- **SWOC Analysis Strength**
- The College is situated on the Gwalior Morena Link Road Gwalior and may be helpful in attracting students of rural background to increase GER of state.

Weaknesses

- Rural situation of the college doesn't allow facilities of convenience for girl students to reach equally.

Opportunity

- The college takes the responsibility to facilitate all learners.

Challenges

- The college desires to run B.sc.B.Com and M.A Classes in near future to obtain its goals when it has its own building and sorts ground with other facilities required to run such courses like Labs and library, Sport .

- **Looking Ahead (Future Plans)**

:: It's a building less college so the IDP is being prepared separately::

A general plan however is being given as following

Key Initiatives Planned/ implemented

S. No	Head (administrative/ academic, etc.)	Nature of proposal	Expected Outcome
1	Office computers	purchase and procurement	Function of Institution
2	Furniture for Class rooms	purchase and procurement	Function of Institution
3	Library Almirahs and other necessary instruments	purchase and procurement	Function of Institution
4	Sports office facilities	purchase and procurement	Function of Institution
5	NSS Facilities	purchase and procurement	Function of Institution
6	Office room with computers, printers, Xerox Machine, Inverters etc.	purchase and procurement	Function of Institution
7	Smart Class room boards and projector	purchase and procurement	Function of Institution
8	TT Table, Badminton net, Yoga Mats, Gym Equipments etc.	purchase and procurement	Function of Institution
9	Books, Journals, Magazines, Almirahs	purchase and procurement	Function of Institution
10	Sick room medical facilities	purchase and procurement	Function of Institution
11	Computer with computers, UPS, and printers	purchase and procurement	Function of Institution

Signature and Seal of Principal